

PREFIX MATCH UP

CUT OUT THE TEAL AND GREY CARDS. THE GREY CARDS ARE THE ROOT WORDS, AND THE TEAL CARDS ARE THE PREFIXES. PASTE THEM IN THE APPROPRIATE SPACE AND WRITE THE NEW WORD.

TABLE OF CONTENTS

PREFIX + ROOT WORD MATS 3

PREFIX CARDS 9

ROOT WORD CARDS 11

PREFIX + ROOT WORD MATS

PRINT OUT THESE MATS TO USE AS THE BASE
FOR THE MATCHING OF PREFIXES AND
ROOTWORDS!

EXAMPLE

dis

+

like

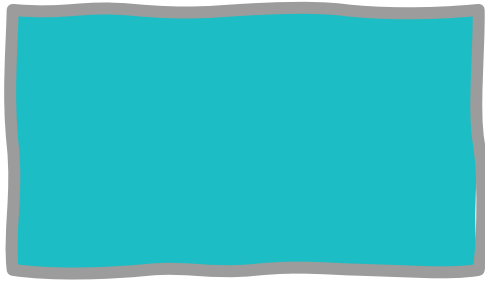
=

dislike

PREFIX

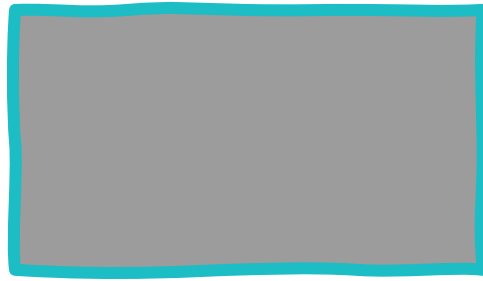
ROOT WORD

NEW WORD



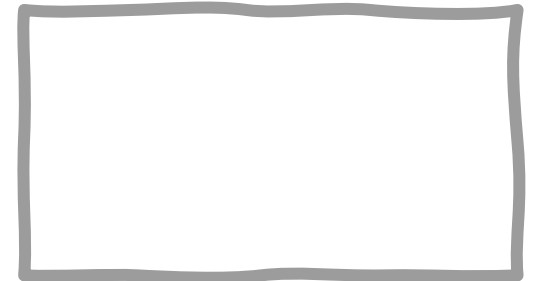
PREFIX

+

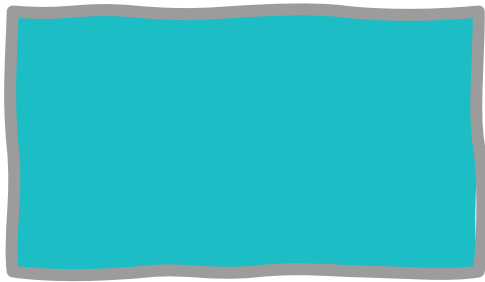


ROOT WORD

=



NEW WORD



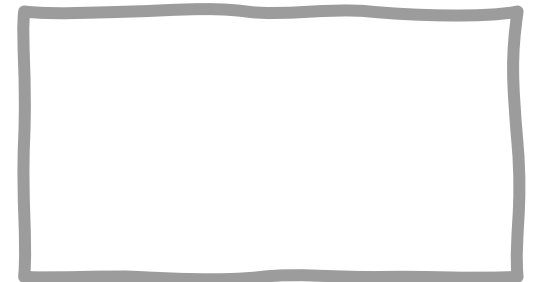
PREFIX

+

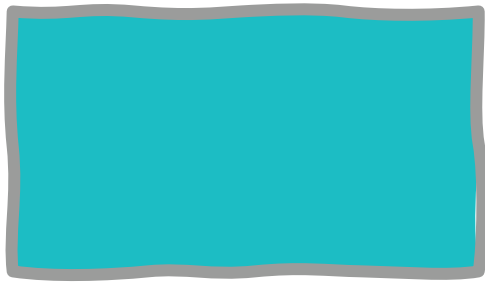


ROOT WORD

=



NEW WORD



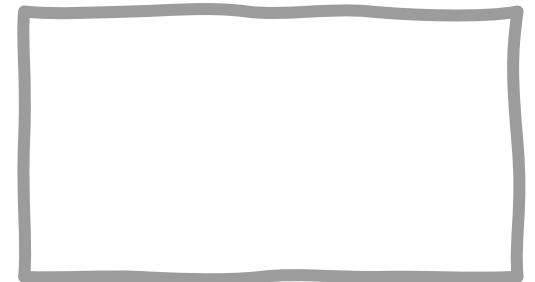
PREFIX

+

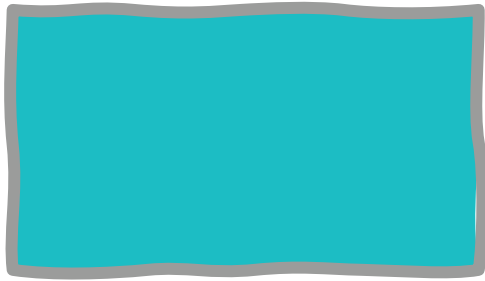


ROOT WORD

=

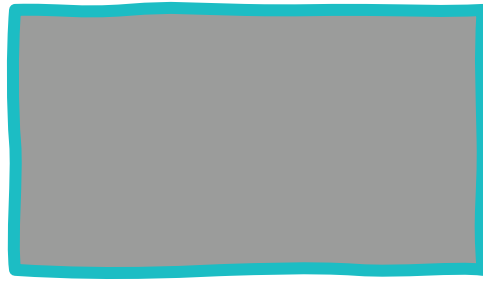


NEW WORD



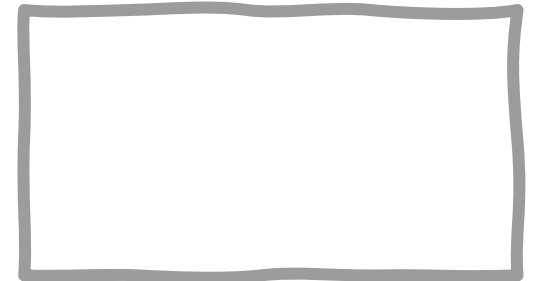
PREFIX

+

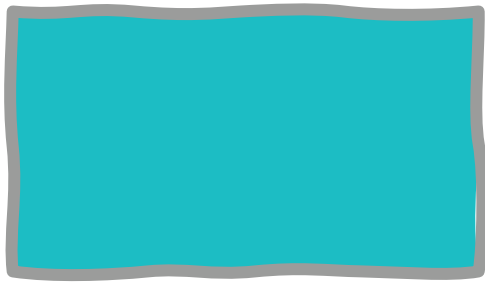


ROOT WORD

=



NEW WORD



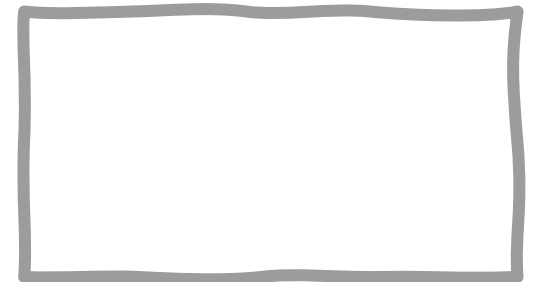
PREFIX

+

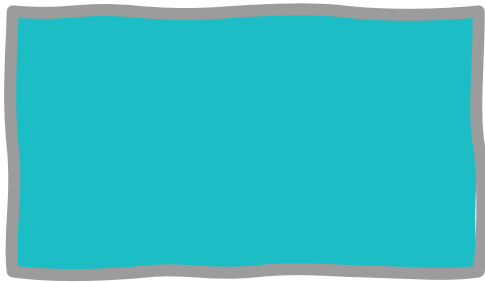


ROOT WORD

=



NEW WORD



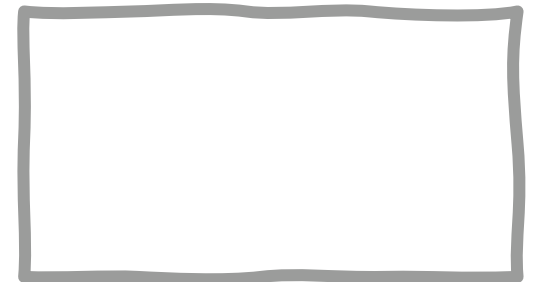
PREFIX

+

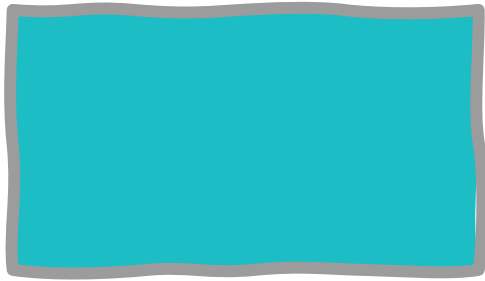


ROOT WORD

=

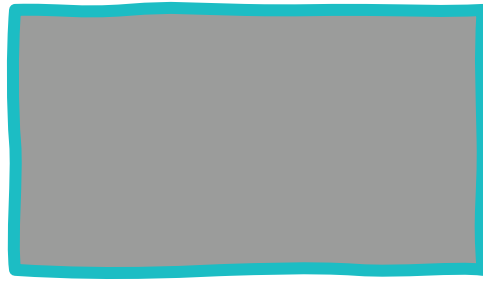


NEW WORD



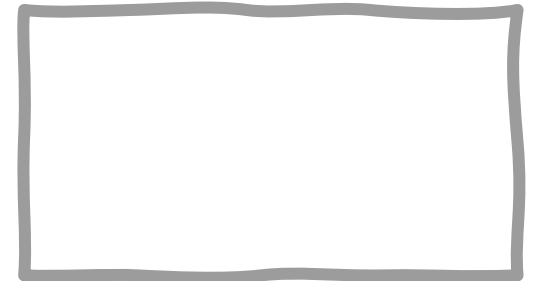
PREFIX

+

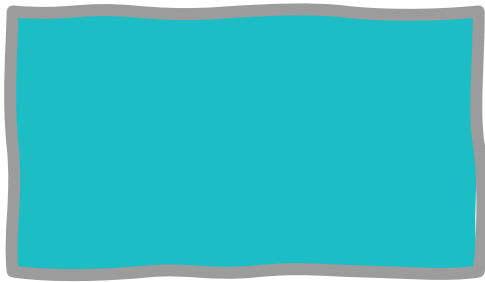


ROOT WORD

=



NEW WORD



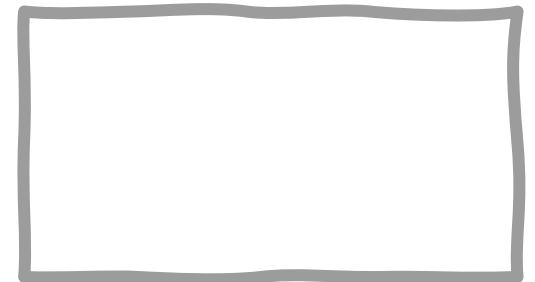
PREFIX

+

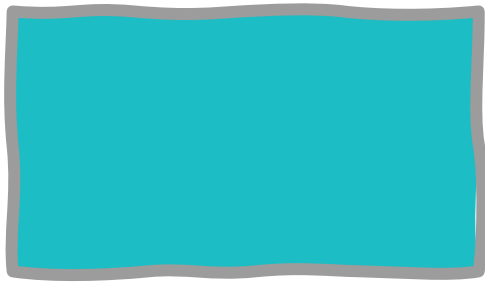


ROOT WORD

=



NEW WORD



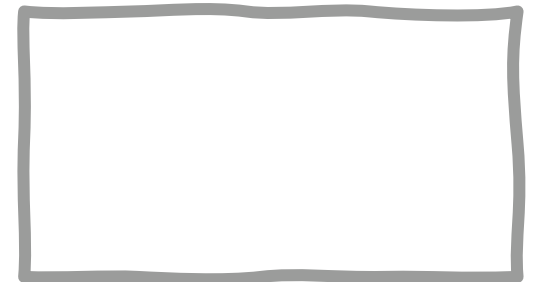
PREFIX

+

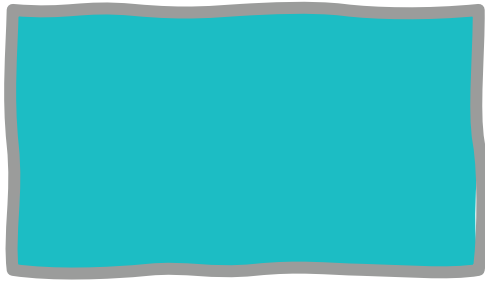


ROOT WORD

=

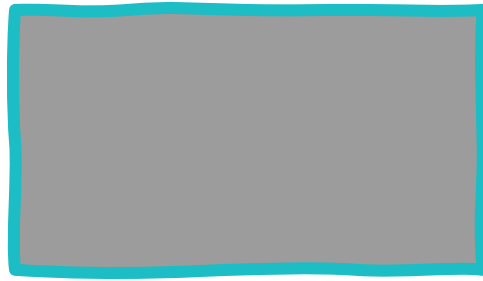


NEW WORD



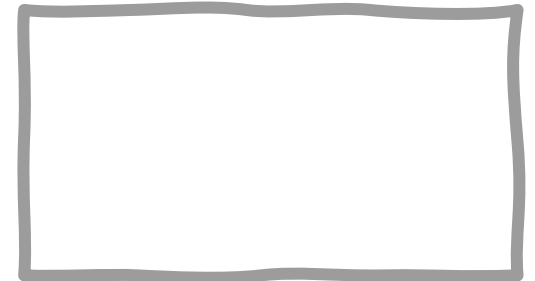
PREFIX

+

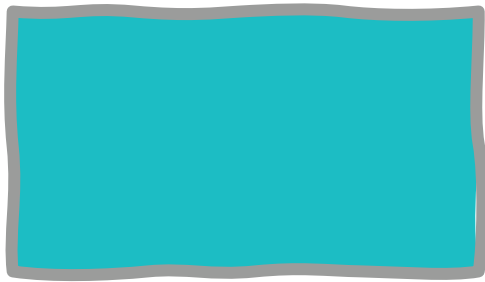


ROOT WORD

=



NEW WORD



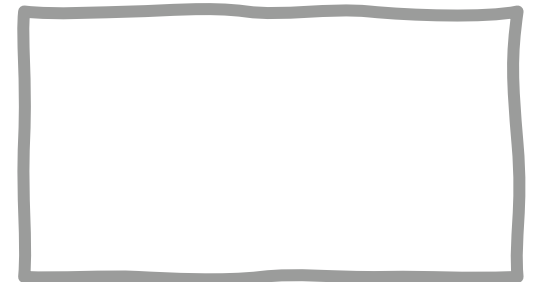
PREFIX

+

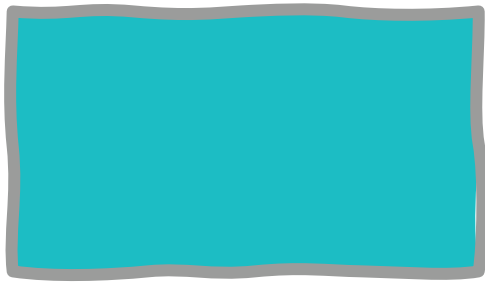


ROOT WORD

=

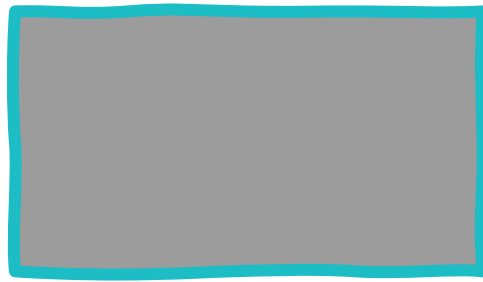


NEW WORD



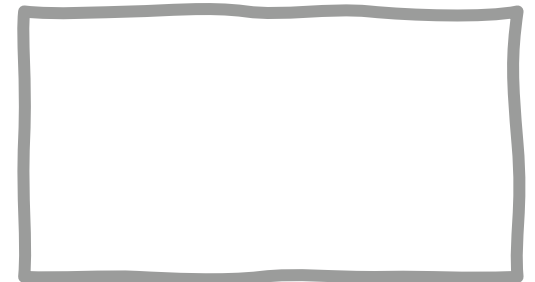
PREFIX

+



ROOT WORD

=



NEW WORD

PREFIX CARDS

CUT OUT THESE CARDS AND PASTE THEM ON
THE PREFIX BOX ON THE MAT.

un

re

dis

pre

mis

non

un

re

dis

pre

mis

non

ROOT WORD CARDS

CUT OUT THESE CARDS AND PASTE THEM ON
THE ROOT WORD BOX ON THE MAT.

happy

paint

like

view

spell

stop

lock

play

believe

paid

match

sense